

2021-2022

*interior design portfolio*

K E N D R A   S E M E S C H U K





earth forward design



kendra semeschuk

D E S I G N  
S T A T E M E N T

*I believe that design*

not only shapes how we feel, but can shape the way we think as well. Our environment is a reflection of our minds, and our minds, a reflection of our environment. We can actually help people feel better by creating nurturing and conscious spaces for them to live and work in. My aim in the design world is to create functional, minimalist retreats that enhance your life and mental health by bringing mother nature to you.





By pairing eco-friendly, earth conscious design with dramatic finishes and terrestrial textures, I believe we can make the world a better place not only to look at, but to live in, too. By integrating mother nature back into design, we can ensure longevity in the spaces and in the lives of those who use them. My design style is a marriage of biophilic and a contemporary nordic. Focusing on natural textures, materials and colour schemes; my designs will combine “extra” with “eco-friendly” flawlessly.

“WE CAN ACTUALLY HELP PEOPLE  
*feel better*  
BY CREATING NURTURING  
& CONSCIOUS  
SPACES...”

- kendra

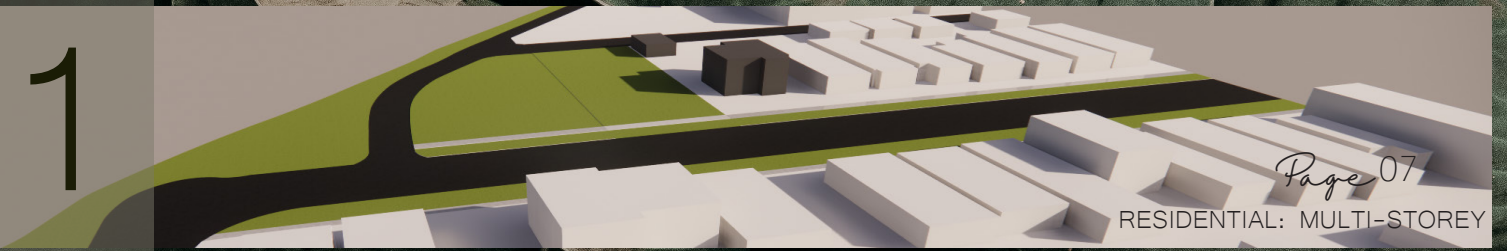








01



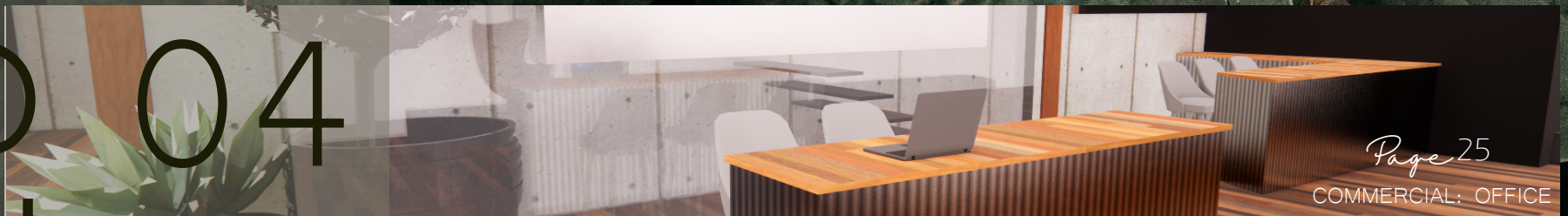
02



03



04



05



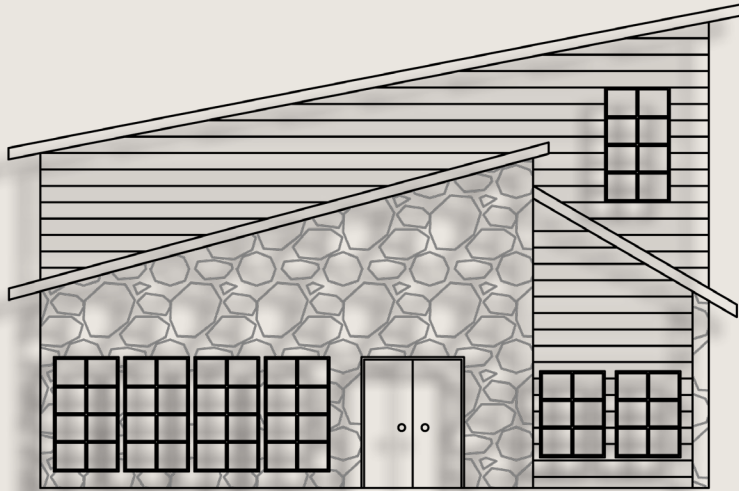


# PROJECT

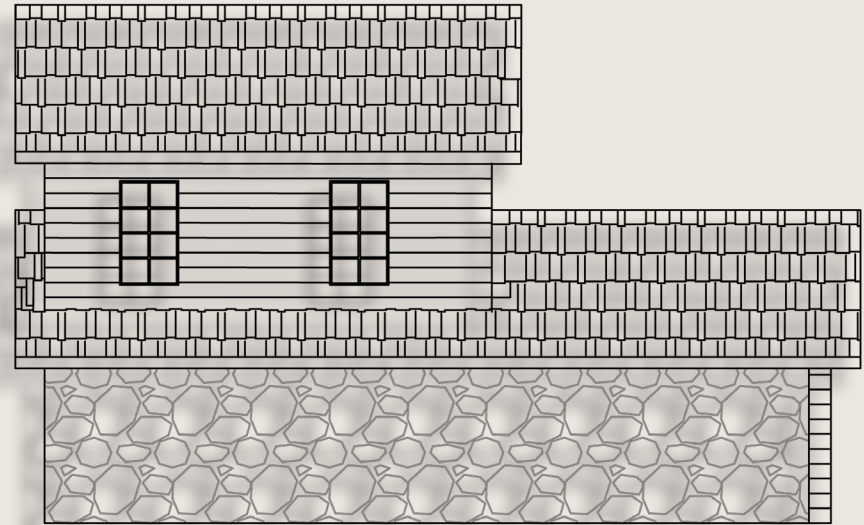
RESIDENTIAL: MULTI-STOREY

# 01

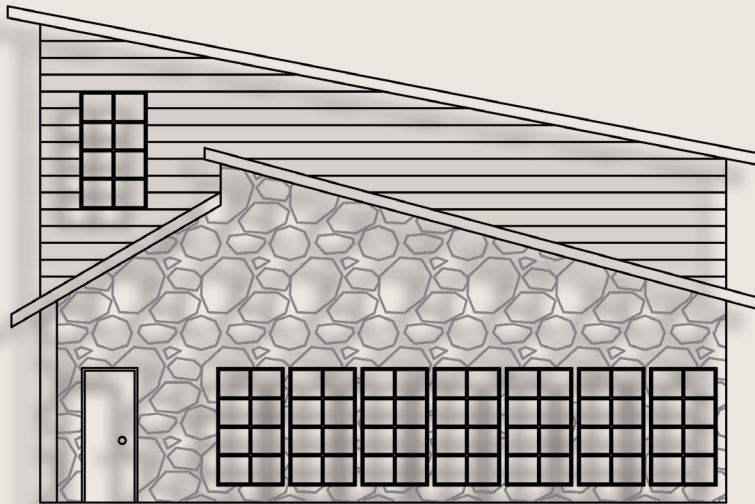
This project was set to be located in downtown Calgary, Alberta. It is a 1.5 storey home with a basement and detached garage. The clients for this custom built home are a wife, husband and their two teenaged children.



EAST ELEVATION



SOUTH ELEVATION



WEST ELEVATION



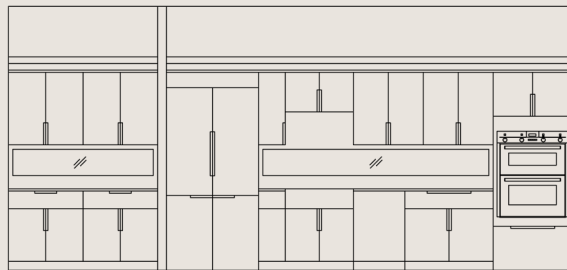
NORTH ELEVATION

This floorplan is a 1.5 storey home. The client had requested a large footprint for the home. The primary suite is located on the main floor, which is another client specific request.

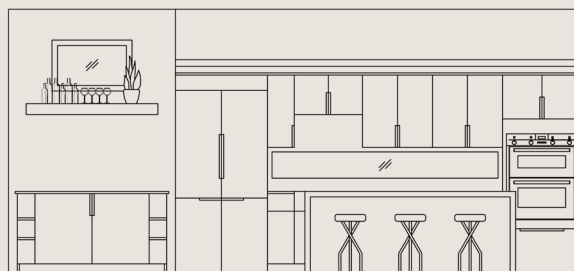
The floorplan features 3 bedrooms, & a separate den; 2 living spaces, a walk through butlers pantry and a main floor laundry room with access from the primary closet.

The walk through butlers pantry offers a small area between the dining room and kitchen to set down dirty dishes after a meal or hide away unsightly pots after cooking.

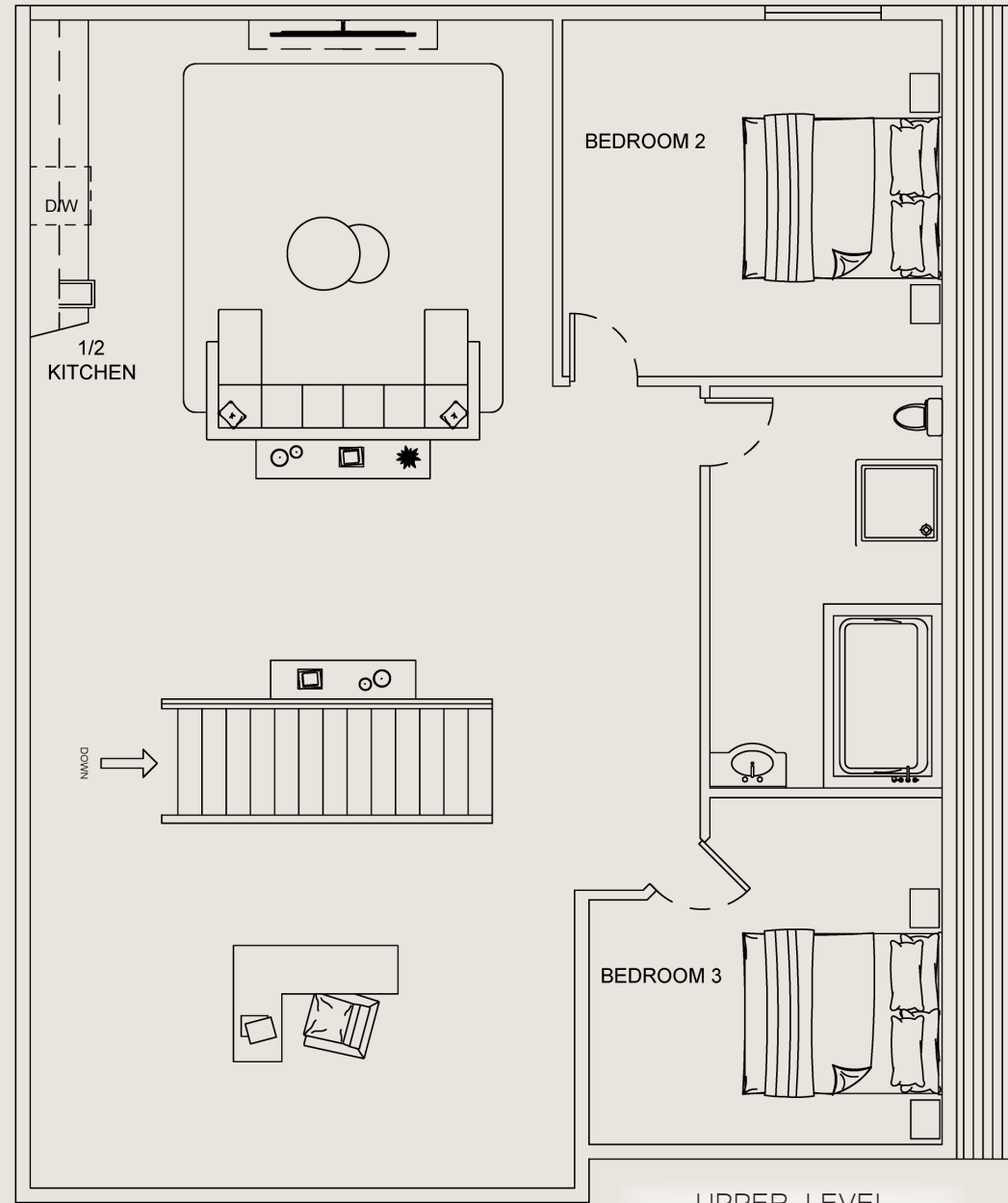
The bar area is where guests can top up their drinks and admire the glass wine cooler steps away.



BUTLERS PANTRY ELEVATION

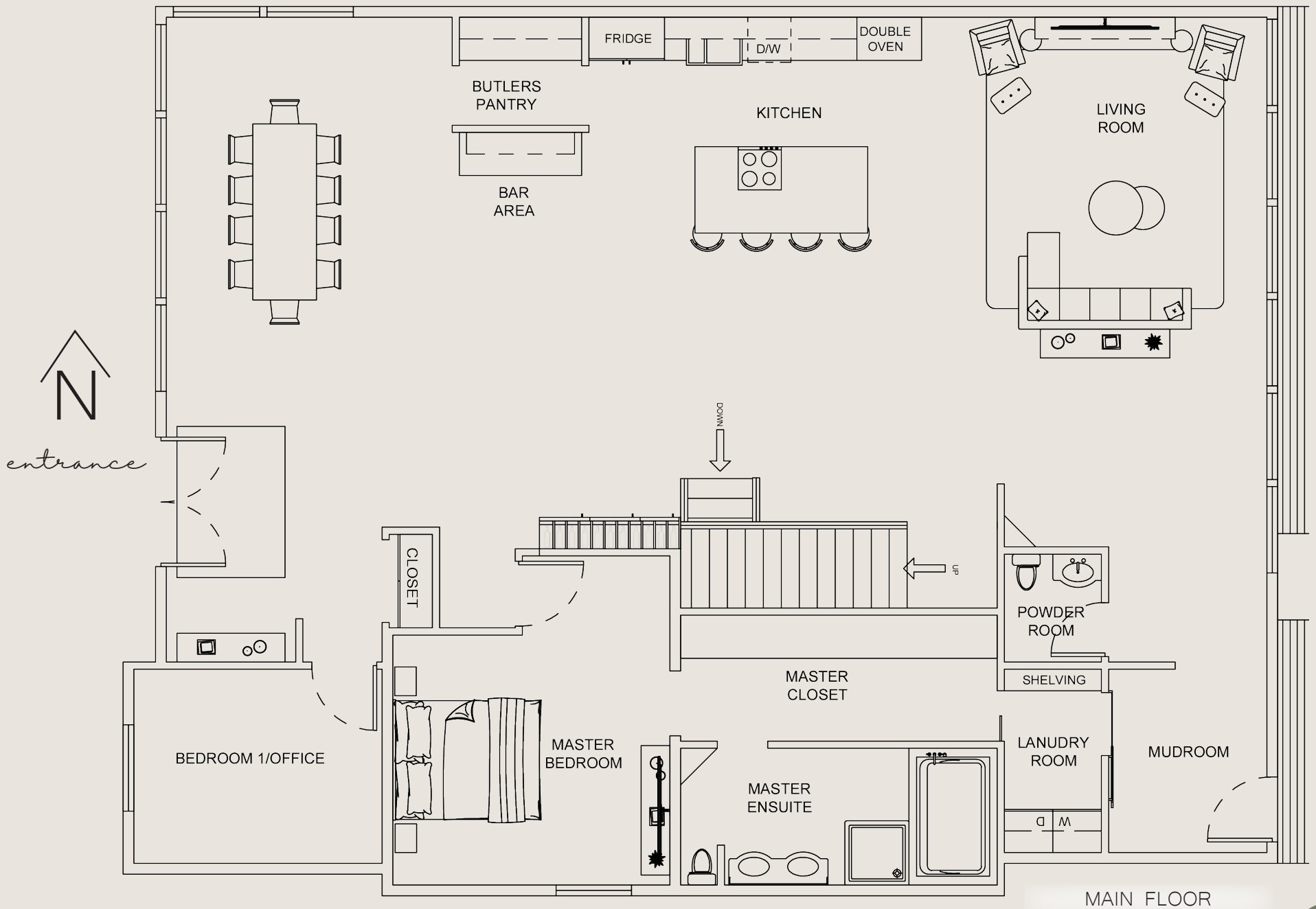


BAR AREA ELEVATION



UPPER LEVEL

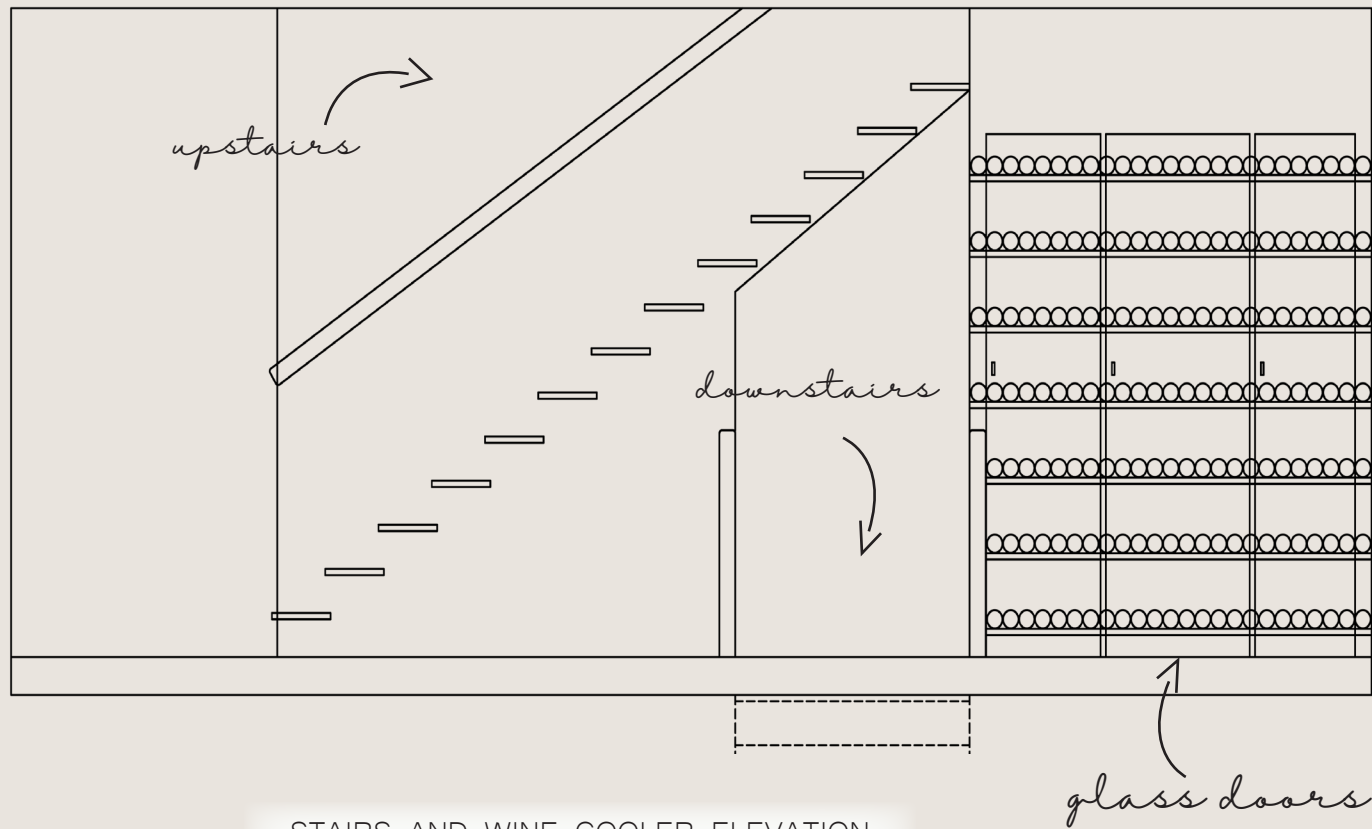




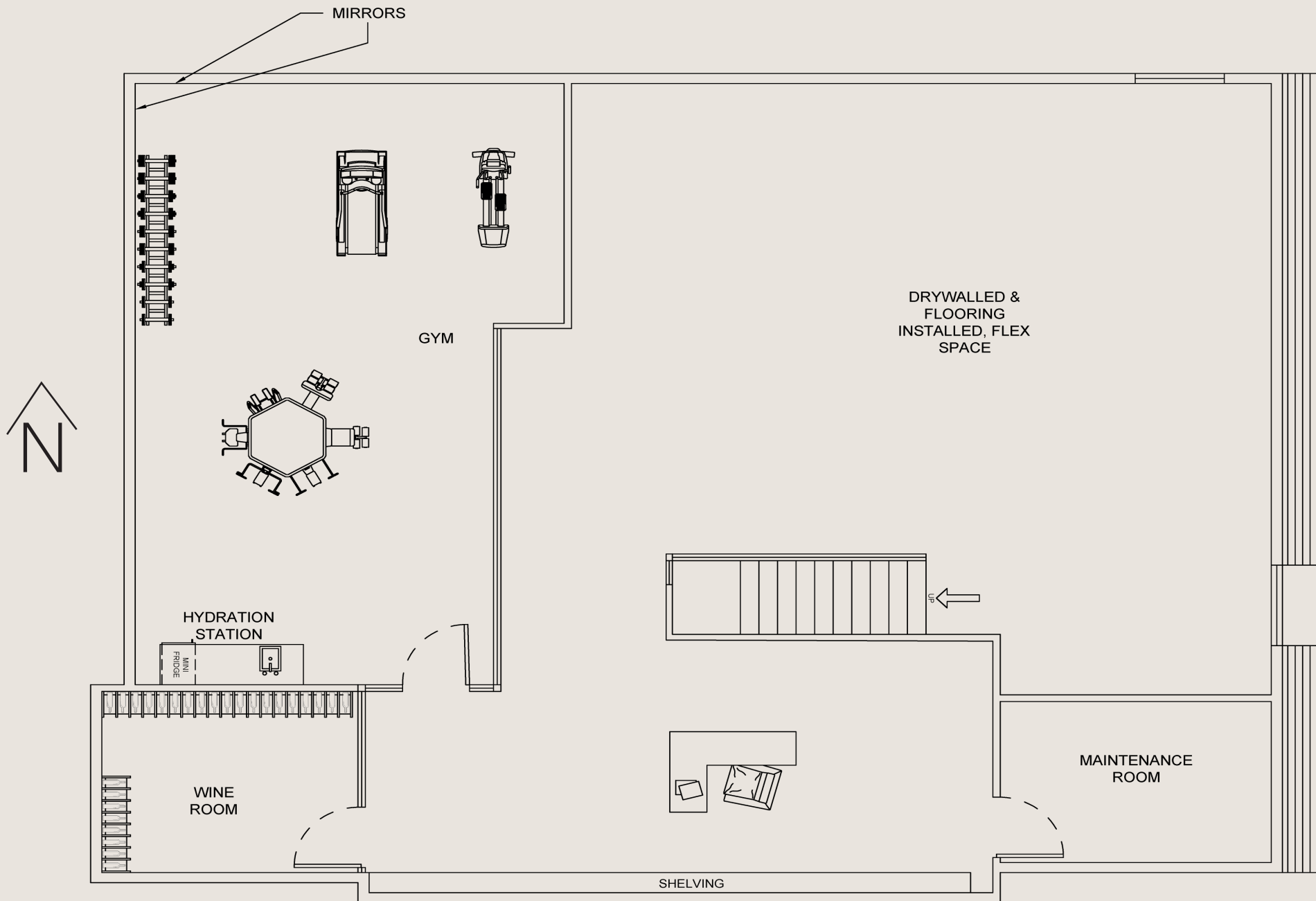
MAIN FLOOR

The stairs as well as the wine fridge next to it are all enveloped in glass. There are no frames or mullions, making this space feel seamless and floating. The stairs and a railing are secured to the wall, and a secondary railing is secured to the glass wall. There are three glass doors to access the wine cooler with integrated motion sensor lighting.

The basement is equipped with a full gym, wine cooler, secondary work space, mechanical room and an entire flex space that can be used for another living area, play space for the kids, yoga sessions and wine tasting parties .



STAIRS AND WINE COOLER ELEVATION



BASEMENT

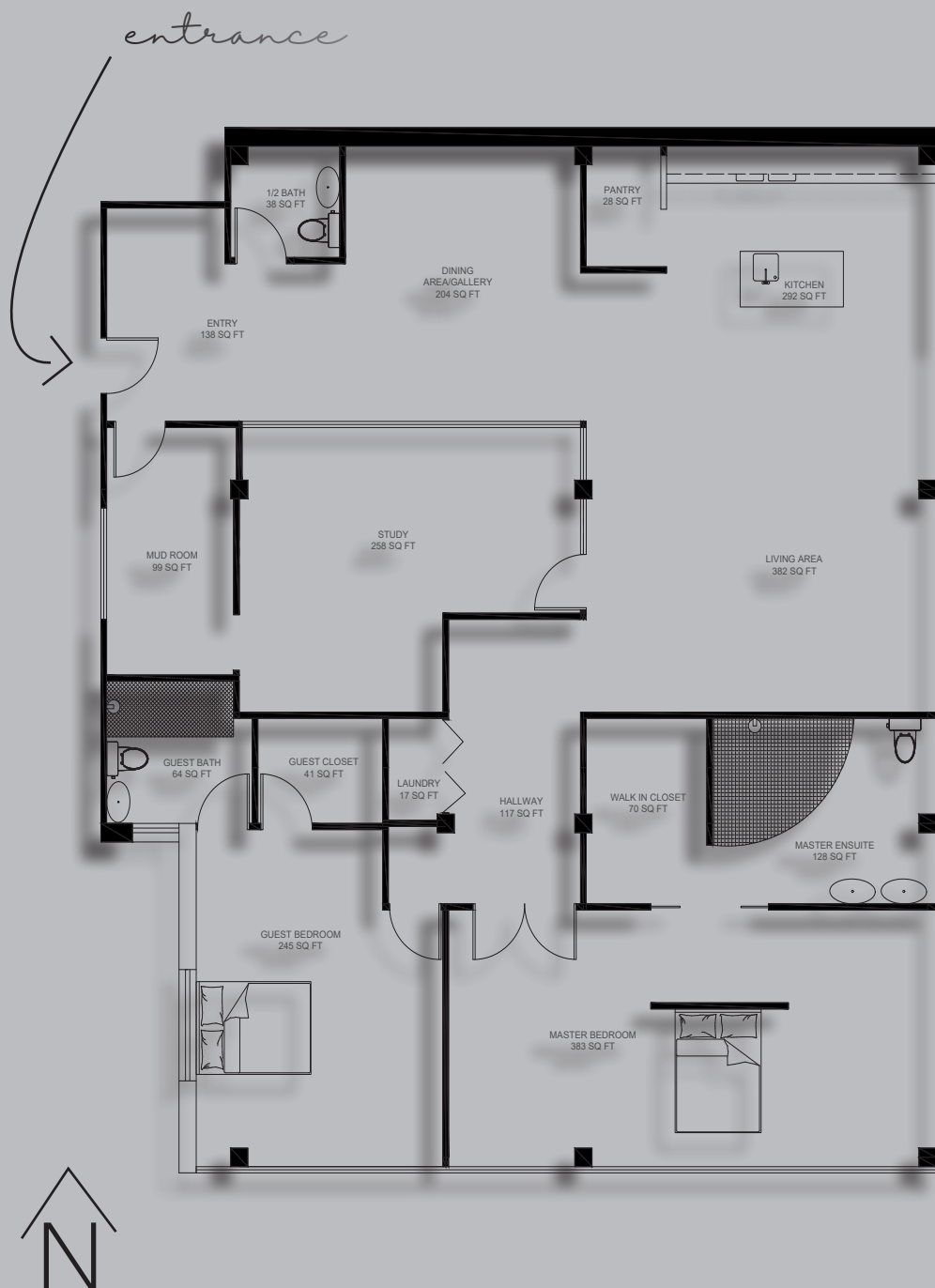


# PROJECT

## WHEELCHAIR ACCESSIBLE HOME

The floorplan of this home was created with specific clients in mind. A member of the household is in a wheelchair, and diagnosed with a progressive condition.

Large traffic areas and functional, yet beautiful spaces were important in this design. This floorplan was originally used for a condo building; and was later made into a single family bungalow.



The entry way allows for lots of room to welcome company. A pass-through mudroom ensures no one gets trapped inside the space. A door leading into the office allows potential clients easy access to the massive Work-From-Home space.

The clients had requested the dining room can double as an art gallery. Therefore, the pantry extrudes enough to create extra display space.

The kitchen is equipped with an accessible sink and cooktop. Floor to ceiling shelving is used inside the pantry making more items accessible on a lower level.

The primary bedroom allows tons of room for getting in and out of bed. Large pocket doors into the ensuite and over sized closet allow for extra maneuvering space. Fully tiling the washroom created the option for a glassless shower.

A large guest area was requested as there will be home care eventually needed.





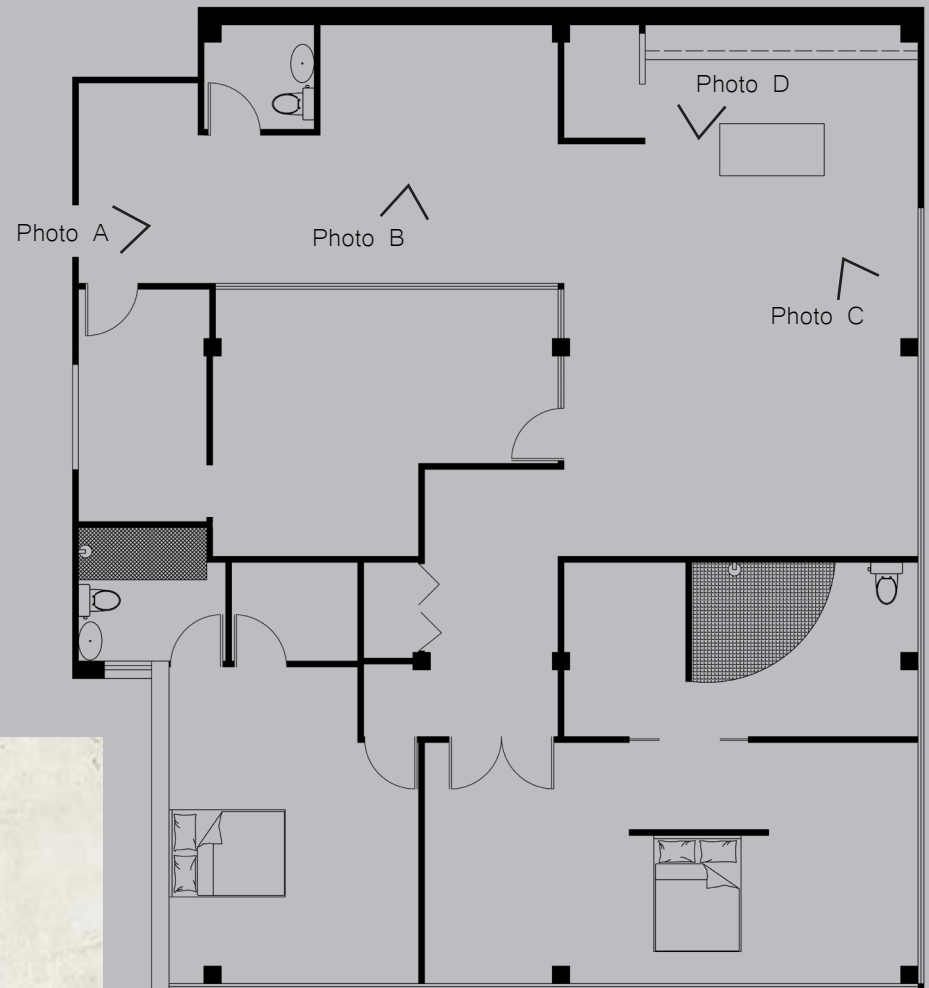
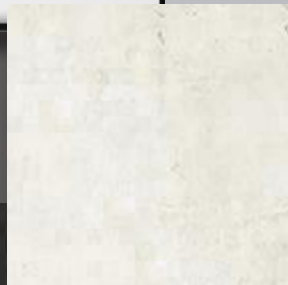
Photo A

The client for this project had initially wanted tons of extra wall space to display her art and collectibles, as she is an art curator. In the condo version of this floorplan, there is no window in the dining room. It wasn't until the floorplan was converted into a single family home, that the window was then added to bring in more natural light.

Walking into the home, there is a wide hallway, with a console table nook to the left to drop your keys. To the right is a pass through mudroom which gives access to the office. There is also the full window wall that gives a view into the office space. The client wanted to be able to showcase the gallery space located in the dining rooms when bringing clients into her home.



Photo B



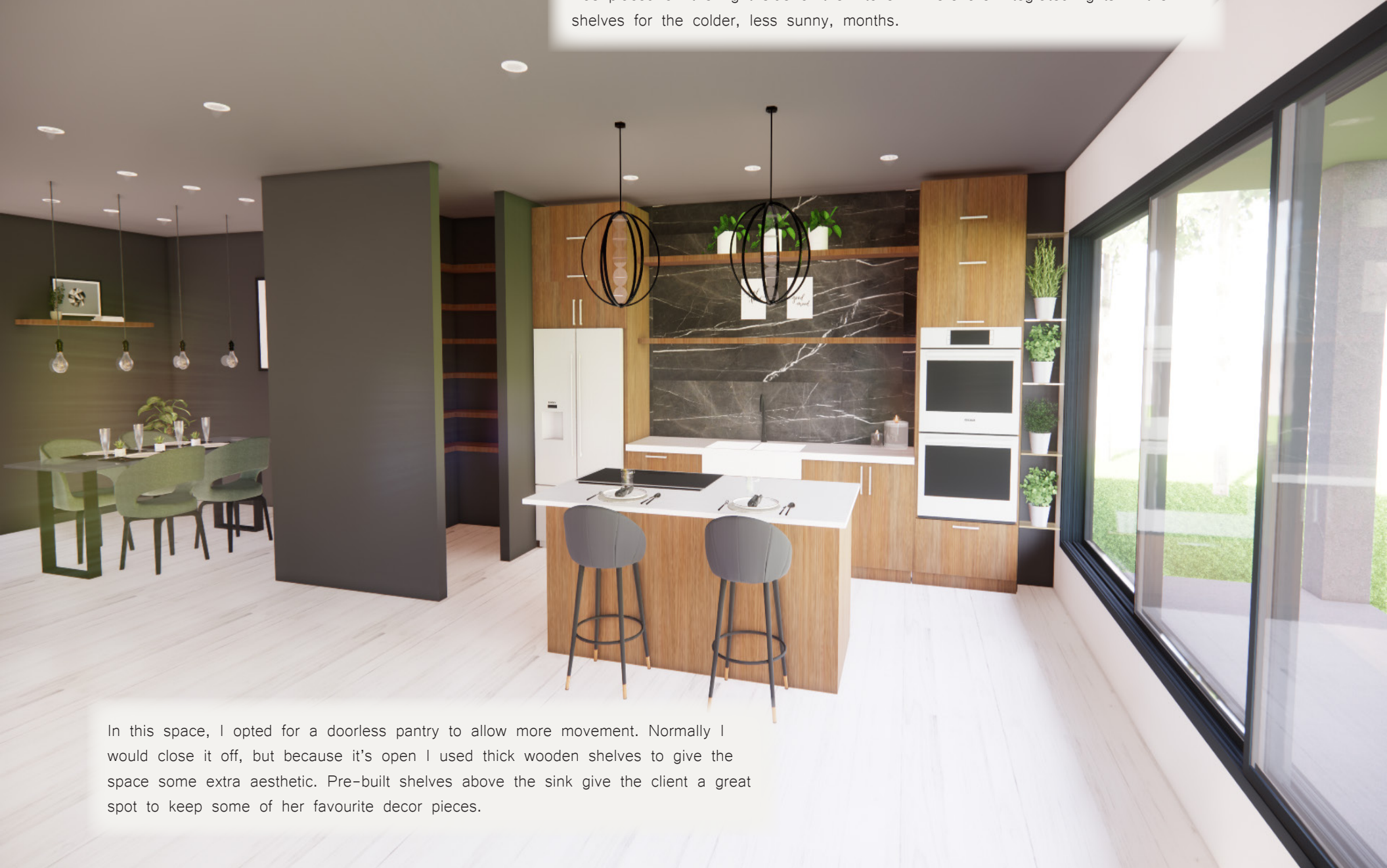
For this project I wanted to bring in a lot of earth elements and textures. Mother Nature has an incredible way of healing and creating peace. I wanted that feeling to be especially abundant in this home. Using things like natural wood, greens and terrestrial textures, I was able to create a calm, yet deep and moody space for the client to showcase her art.





## Photo C

Allowing natural sunlight into a space that is intended to promote health is important. Floor to ceiling windows were used, and a mini vertical herb garden was placed on the right side of the kitchen. There are integrated lights in the shelves for the colder, less sunny, months.

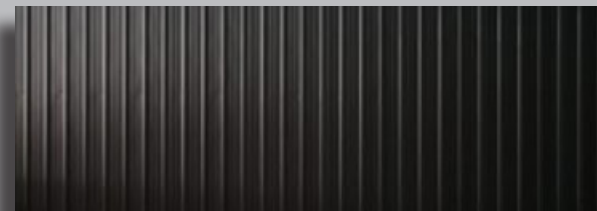


In this space, I opted for a doorless pantry to allow more movement. Normally I would close it off, but because it's open I used thick wooden shelves to give the space some extra aesthetic. Pre-built shelves above the sink give the client a great spot to keep some of her favourite decor pieces.

Photo 7



The living room continues with the wood shelving, but placed on a corrugated metal backdrop for added drama. The couch floats alone in the room, and a tray is placed on the couch to house drinks and items – keeping the floor space open. I opted for no rug again to help with movement throughout the room.





# PROJECT

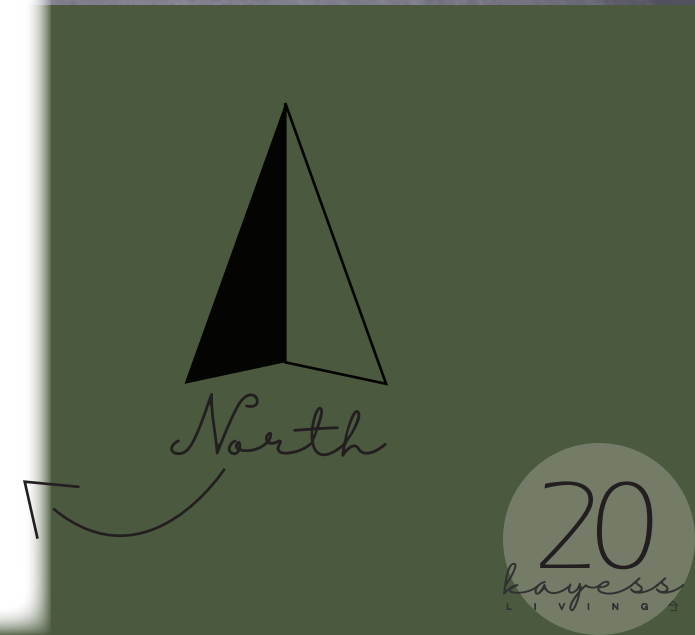
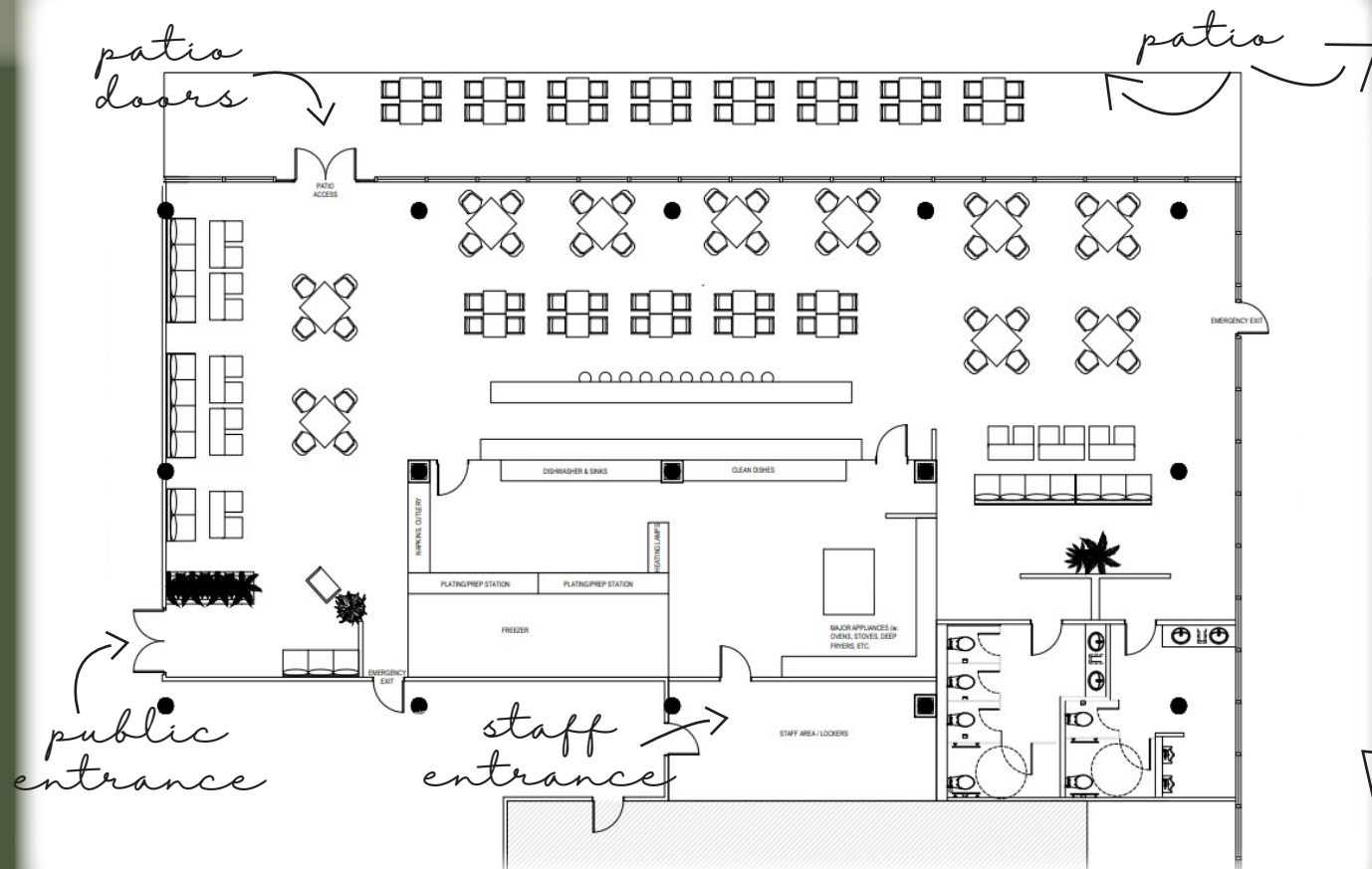
COMMERCIAL: RESTAURANT

The Hempseed Restaurant was designed for friends to gather and enjoy a good, relaxing meal. The goal for this space was to give people the opportunity to enjoy a different type of food, in a unique environment. Using natural materials like hemp, and hempseeds in the items found in the restaurant as well as in the food, 'the Hempseed' creates a new atmosphere on every level. Placing the Hempseed in the trendy area of Port Moody, BC – the response to the high level of cuisine and unique food experience is expected to be resounding.

the hempseed

The exterior of the Hempseed was designed with its environment in mind. It was wrapped with black corrugated metal as well as earth friendly composite pole wrap. Clean materials that are not only gorgeous, but extremely durable were used to ensure this building withstands the test of time on a BC shoreline.

The floorplan can be seen below, with 5 different entrance and exit doors.







The furniture choices for this restaurant have a lot of natural texture and colour tones in them. Materials like leather, teak, hemp and metal are used for the booths, tables, chairs and barstools.



West Elm - Mid  
Century Dining Table



Restaurant Furniture  
Canada - Black Metal  
Fram Faux Teak Top



West Elm - Mid  
Century Upholstered  
Dining Chair in Linen



emu - Darwin  
Armchair in Black

Aretto Commercial -  
Darwin Barstool  
in Black



American Tables &  
Seating - Standard  
Booth in Black





For this design, I wanted to keep a lot of the materials light and either hemp based or upcycled. The planter, hostess station and the bar front are custom made hollow plexi-glass shells filled with hemp seeds.

The ceiling is wall-papered with hemp leaves to bring in the sense of outdoors, while keeping it food safe.







The feature wall in the event table space is made up of copper hexagon shaped pieces. This is placed approximately 6' in front of the wall that hides the washroom doors behind it.







The lighting for the space was created by grouping individual light fixtures together on a round piece of wood. The wood was stained to be coherent with the space, and natural materials were used for the lampshades.



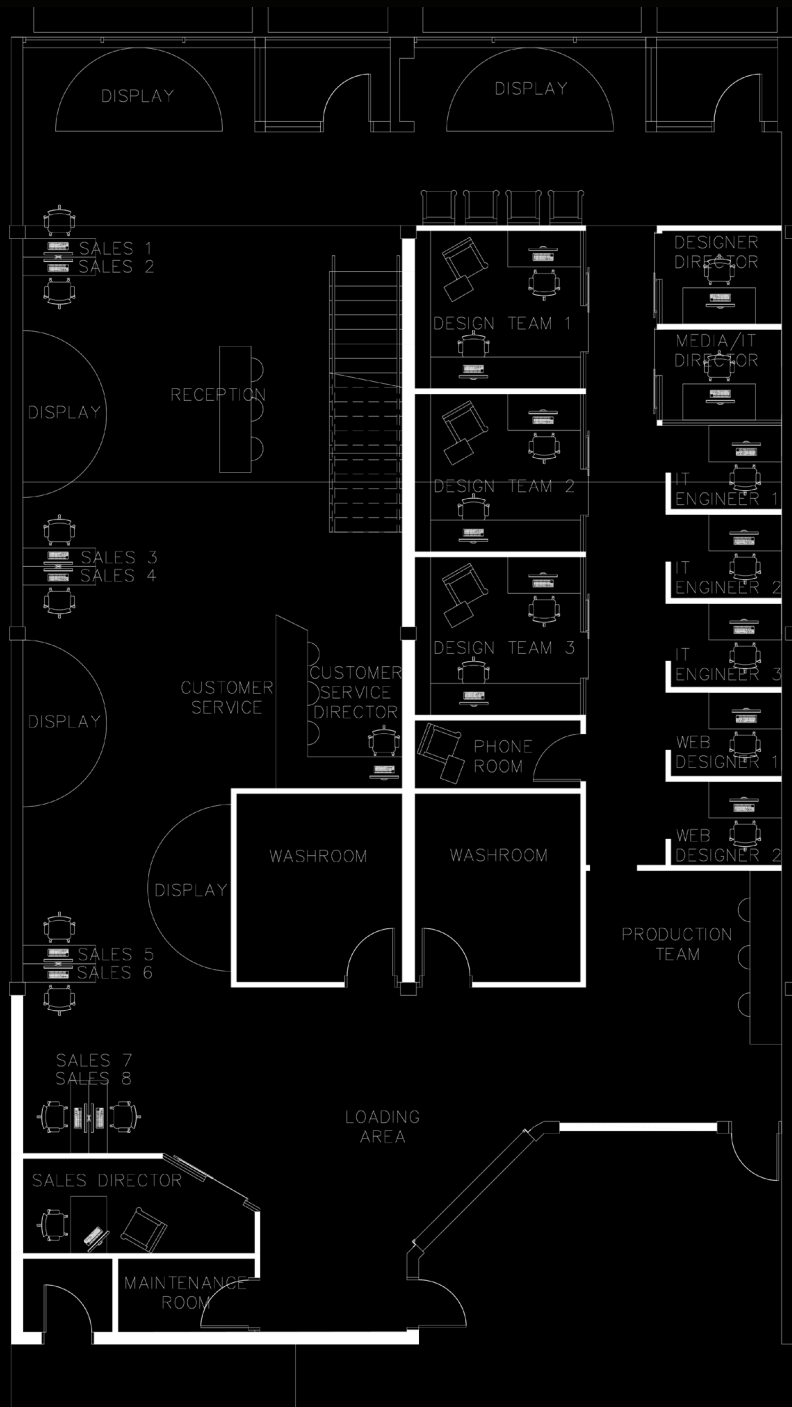


PROJECT

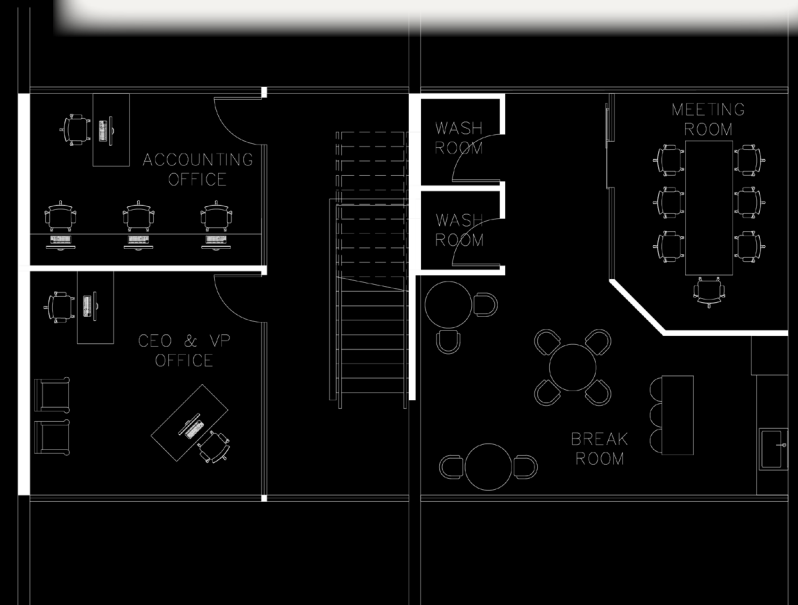
COMMERCIAL: OFFICE

04

*in* MOOD  
FURNITURE COMPANY



InMood Furniture Company was in need of an office design. The building structure was already decided, and there was a mezzanine above. This office design was a challenge, as it required two separate working areas for the company to function. The gallery and sales side, as well as the office and design side. There is also a loading dock located at the back of the building.



Sales and gallery is on the West, the offices and design side are on the East, and the corporate positions have offices in the mezzanine above.



# Overall Aesthetic

for INMOOD FURNITURE COMPANY

Dark paint

Black Iron -  
Benjamin Moore

Oak Luxury Vinyl  
Plank - Forest  
Valley Flooring

Etsuyo Light -  
Gracie Oaks

Use of  
warm woods

Exposed industrial  
features

Large open areas with black walls and  
'floating' offices along the edges near  
the windows.



INSPIRATION  
PHOTO

## Offices

Large glass walls will be  
used.

Offices will be full of plants and  
light. They will provide a private  
space for clients to discuss their  
purchases in private.

Super White -  
Benjamin Moore



INSPIRATION  
PHOTO



INSPIRATION  
PHOTO

These were the Concept boards that were used for the client presentation. The photos are inspirational photos to show how the materials would have been used, and the effect trying to be created.

# Furniture Vignettes

for INMOOD FURNITURE COMPANY

Gorgeous light using fixtures and daylight

Eclipse 48V - Erco Light

Luxury furniture vignettes will be created within the space to showcase items.



INSPIRATION PHOTO

High-end, made to order furniture

Large glossy black platforms will be used to showcase the vignettes



Walnut Edge Grain - Hardwood Lumber

Black Finish on Maple - Diamond Cabinets

## Breakroom

Open ceiling

The breakroom will be open and airy. Providing lots of sunlight for the employees to enjoy.

Exposed industrial features

Dark cabinetry



INSPIRATION PHOTO



I wanted to show the client the industrial, yet alive feeling that I was trying to create in the space. I wanted to use a lot of natural and raw elements, and work utilitarian elements into the design rather than hide them.





The end result was modern, industrial and moody – perfect for inMOOD Furniture Company. The receptionists desk is a highly reflective corrugated metal, as well as the sign behind the desk. The customer service sign looks black from this perspective, but is actually the same reflective material as the company's logo sign.

Exposed concrete walls and wood ceilings give the space a raw, yet clean line feeling. Including oversized plants and lots of natural light, a biophilic touch adds life to this office area.





A front view of the gallery shows the pebble shaped loungers in the front window, drawing in foot traffic. The other furniture items that are for sale are placed on raised black platforms that have integrated spotlights to highlight the showpieces.

The staircase to the mezzanine where the CEO and HR departments office are located behind a glass wall. This lands between the reception desk and customer service desk; strategically keeping the corporate side in touch with the front line.



# PROJECT

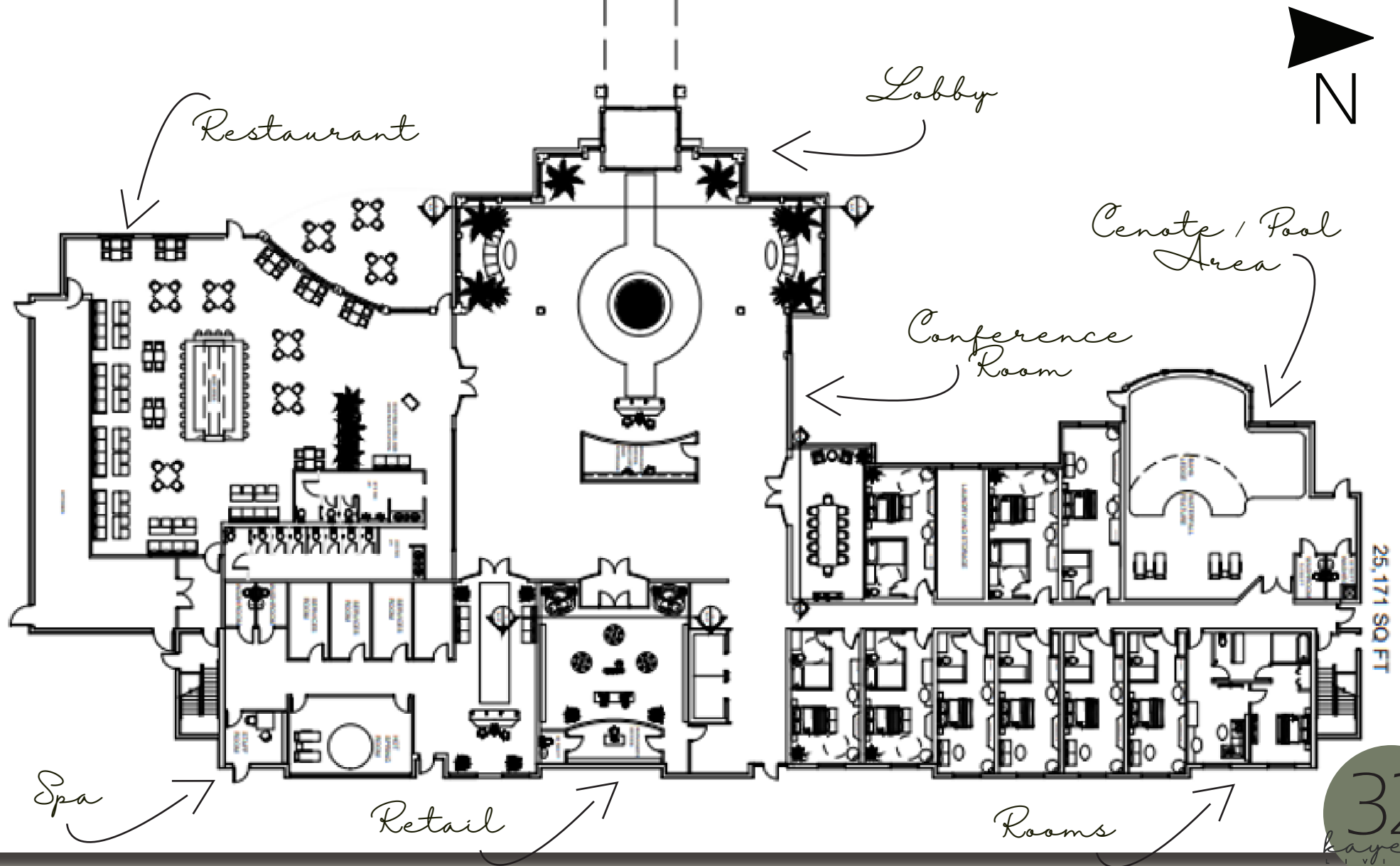
COMMERCIAL: HOTEL



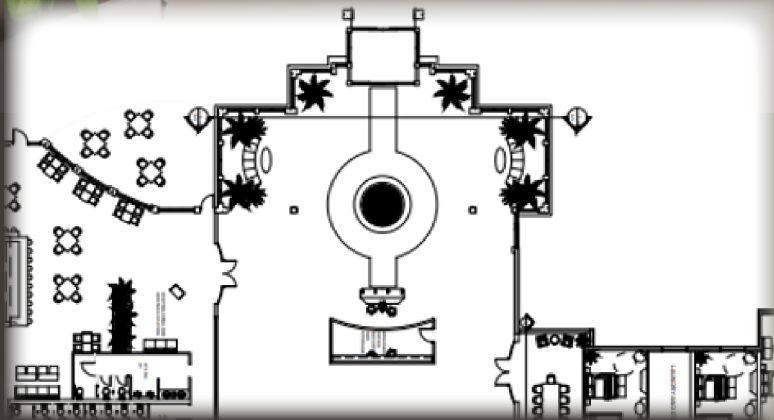
*The Cocotero*  
WHERE THE ROCKIES MEET THE ANDES

The Cocotero, meaning "The Coconut" in Spanish, is a large hotel located in the Bearspaw community outside of Calgary, AB. It is a hotel with an extremely large footprint – over 25,000 square feet. The Cocotero may only have 3 floors, but tons to offer.

The hotel's design features include a 3 storey man made waterfall in the lobby, a cenote with humid temperatures all year round, an on site spa as well as a retail store where you can take home items for your own spa experience. The hotel also has a large Peruvian inspired restaurant that offers room service, as well as a full bar and patio seating area. There is a conference room off the lobby to host business executives as well.



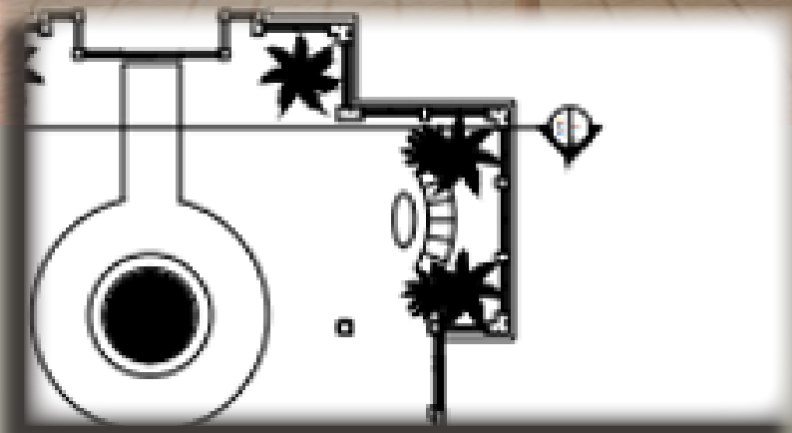




When you first walk into The Cocotero hotel, you're greeted with a natural stone wall that hosts a 3 storey waterfall. The light fixture placed in front was chosen to mimic rainfall. The Spa and Restaurant are to the right, and there is a waiting room to the left. Moving under the large window and natural stone, there is the doors to the conference room, the elevators and the hallway to access the guest rooms. Travertine floors and marble walls envelope the space with luxury.



The waiting area in the lobby was meant to feel calm and welcoming as soon as you walk into the hotel. This vignette has views of the fountain in the center of the hotel, and reception area. A clear sightline to the restaurant across the lobby ensures the guests will want to experience the in house dining experience. A jute rug is used to ground the space, with varying wood tones and textures in the furniture to bring a sense of coziness into such a large space.







Lobby

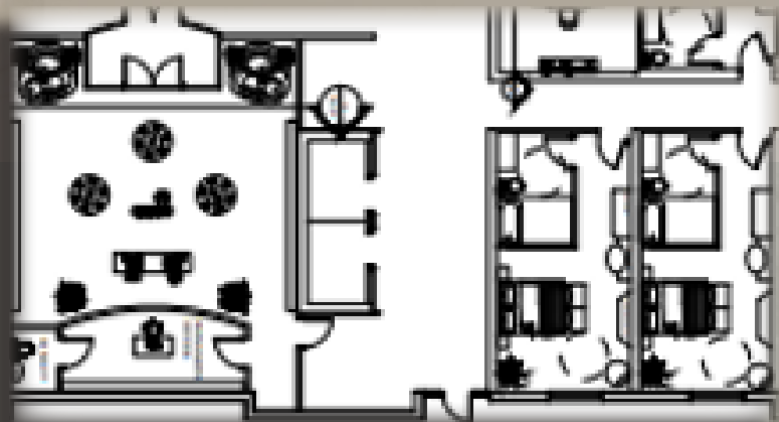
The biggest design feature in the Cocotero lobby are the two massive, custom made rainfall effect light fixtures. The fixtures are made with 225 individual glass tubes; each made out of varying corrugated, flat, and matte glass.

The first place the fixture can be seen is behind the receptionist desk and in front of the waterfall. It is an incredible visual as soon as guests enter the lobby.

The second place it is used is above the waiting area.



Waiting Area



Moving under the rock wall on the left, there is a hallway that accesses the conference room, the elevators and the access to the guest suites. The rug is representative of moss, and earthy tones. The lamp on the sideboard is a unique gold flamingo, once again giving a nod to the warmer climates.

Large palms and plants are used in the space, as well as wood finishes and marble to mix luxury with coziness. There is an emergency access at the end, as there is a employee access door to the back of the retail space around the elevators, out of view.

Custom signage and lighting was created to ensure the guests know how to find what they are looking for.





When the guests find their room, they'll be happy to be greeted by warm colours, South American themed art and loads of exciting textures and tones. The lights are a woven shade, the bed is teak wood and the end tables are hand carved from Brazil. Every detail is meant to give you the feeling of being on vacation without having to leave the country. There is a separate living space and kitchenette that attaches to the king suite. The bathroom in this unit is a walkthrough bathroom, allowing access from both the bedroom and near the main entrance to the suite for easy access.





The King Suite is located at the end of the hallway, allowing for privacy away from the main lobby and giving easy access to the cenote pool across the hall.

There are floor to ceiling windows so guests can enjoy the view outside. The light fixture in this space is a bamboo fixture, and the rug is jute to bring in more natural textures.

